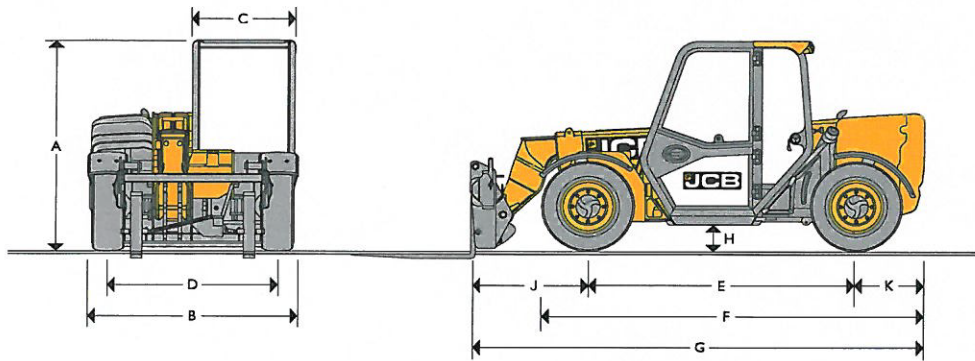


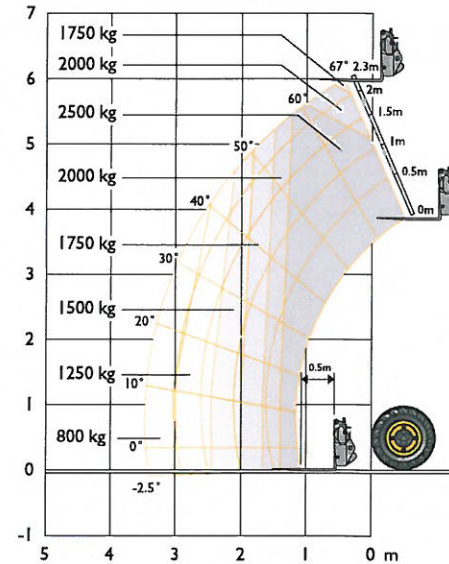
STATIC DIMENSIONS



| | | | |
|---|----------------------------------|------------|---------|
| A | Overall height* | m | 1.89 |
| B | Overall width (over tyres)* | m | 1.84 |
| C | Inside width of cab | m | 0.88 |
| D | Front track | m | 1.53 |
| E | Wheelbase | m | 2.39 |
| F | Overall Length to front tyres | m | 3.38 |
| G | Overall length to front carriage | m | 4 |
| H | Ground clearance | m | 0.23 |
| J | Front wheel centre to carriage | m | 1.02 |
| K | Rear wheel centre to rear face | m | 0.6 |
| | Outside turn radius (over tyres) | m | 3.7 |
| | Carriage roll back angle | degrees | 11 |
| | Carriage dump angle | degrees | 114 |
| | Weight | kg | 5490 |
| | Tyres | industrial | 12x16.5 |

*Dependant upon tyre specified.

LIFT PERFORMANCE



| | | |
|--|----|-------|
| Maximum lift capacity | kg | 2500 |
| Lift capacity to full height | kg | 1750 |
| Lift capacity at full reach | kg | 800 |
| Lift height | m | 6 |
| Reach at maximum lift height | m | -0.15 |
| Maximum forward reach (to front of carriage) | m | 3.5 |
| Reach with 1.2 tonne load | m | 2.64 |

Complies with stability test EN 1459 Annex B.