

TB217R

Standard UK Specification - Long Dipper

Engine	
Make	YANMAR
Model	3TNV70-PTB1R
Rated Output (kW)/rpm	11.5/2400
Maximum Torque (Nm)	52.6
Cylinders	3
Displacement (cc)	854
Electrical System	12 V 48 A

Dimensions & Weight	
Operating Weight inclusive of bucket and fuel (kg)	1680
Overall Length (mm)	3460
Overall Length dozer at rear (mm)	3970
Width cab/canopy (mm)	980
with extended track (mm)	1300
Height cab/canopy (mm)	2345
Ground Clearance (mm)	205
Min. Front Swing Radius (mm)	1470
Tail Swing Radius (mm)	730

Operating Information	
Max Digging Depth (mm)	2390
Max Dump Height (mm)	2545
Max Reach at Ground Level (mm)	3945
Max Vertical Digging Depth (mm)	1970
Max Bucket Digging Force (kN)	14
Max Arm Digging Force (kN)	8.2

Hydraulic System	
Main System Pressure (bar)	210
Pump Type	Variable + Double Gear
1st Auxiliary Maximum Flow (l/min) / Pressure (bar)	33/210
*2nd Auxiliary Maximum Flow (l/min) / Pressure (bar)	10/200

Swing System	
Boom Swing Angle (R/L)	70° / 50°
Slew Speed (rpm)	9.2
Slew Motor	Trachoid Gear
Slew Brake	Wet Friction Plate

Undercarriage	
Traction Motor	Piston
Traction Drive	Epicyclic Gearing
Traction Brake	Wet Friction Plate
Traction Width (mm)	230
Ground Contact Length (mm)	1205
Ground Pressure (kpa)	26.9
Travel Speed (km/h)	2.2-4.2
Maximum Gradeability	15°

Capacities	
Hydraulic System (l)	24
Fuel Tank (l)	22
Engine Lubrication (l)	2.8
Cooling System (l)	3.9

All dimensions unless otherwise stated are in millimeters.

OPTIONS: Hydraulic breaker, hitches, buckets.

*Factory fitted option - 2nd, & 3rd Auxiliary and change over valve.

6/2020

Takeuchi machines come with a 2 year/2000 hours warranty as standard. Warranty exceptions to 1 year: fuel injection systems, electrical components, paint work and *emission control items. (*applicable models). Before fitment of a hydraulic attachment machine auxiliary pressure and flow should be accurately measured.

In accordance with our established policy of constant improvement, we reserve the right to amend these specifications at any time without notice.

Photographs shown may feature non-standard equipment.

For more information locally

call us direct, or contact:



Takeuchi Mfg (UK) Ltd, Unit E2B Kingsway Business Park,
John Boyd Dunlop Drive, Rochdale, Lancashire OL16 4NG
Tel: 01706 657 722 Fax: 01706 657 744

Southern Depot at 20 Colthrop Business Park
Colthrop Lane, Thatcham, Newbury, Berks RG19 4NB
Tel: 01635 877 196 Fax: 01635 877 195

www.takeuchi-mfg.co.uk Email: sales@takeuchi-mfg.co.uk

TAKEUCHI
Japanese for Reliability



LIFTING CAPACITIES

Rated lift capacity chart

- The loads in the charts do not exceed 87% of hydraulic lift capacity or 75% of tipping load.
- Figures marked with an asterisk (*) are hydraulically-limited capacities.
- The bucket mass is excluded.
- The mass of slings and any other lifting devices shall be deducted from the rated load to determine the net load that may be lifted.
- The load point is the bucket hinge pin. The bucket cylinder is fully extended.
- Unit: kg (lbs)

Load hooking system

A load hooking system must be provided with the following capabilities.

1. A system which can withstand two-and-a-half times the rated lift capacity no matter at what position the load is applied.
2. A system that poses no risk of the lifted load falling from the hooking device. For example, equipped with a hook slippage prevention device.
3. A system that poses no risk of the hooking system slipping from the hoe attachment.



WARNING

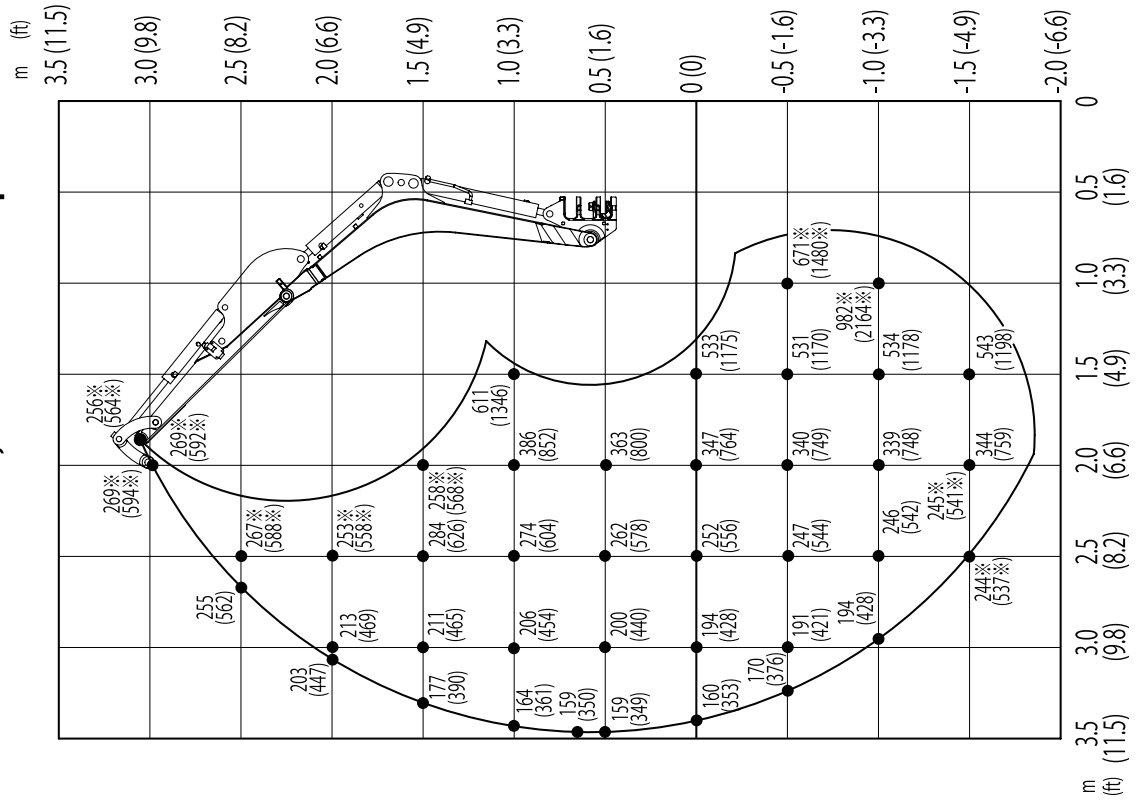
- Do not attempt to lift or hold any load that is greater than these rated values at their specified load radii and height.
 - The rated lift capacities are based on the machine being level and situated on a firm supporting surface. For safe lifting, the operator is expected to make due allowance for the particular job conditions such as soft or uneven ground, non-level condition, side loads, hazardous conditions, experience of personnel, etc. The operator and other personnel should fully acquaint themselves with the operator's manual furnished by the manufacturer before operating this machine. When operating the machine, the safety rules of the equipment must also be followed.
 - Do not travel while lifting a load; It is very dangerous.
-



SPECIFICATIONS
LIFTING CAPACITIES

TB217R Long arm

Over Front ; Dozer Blade Up

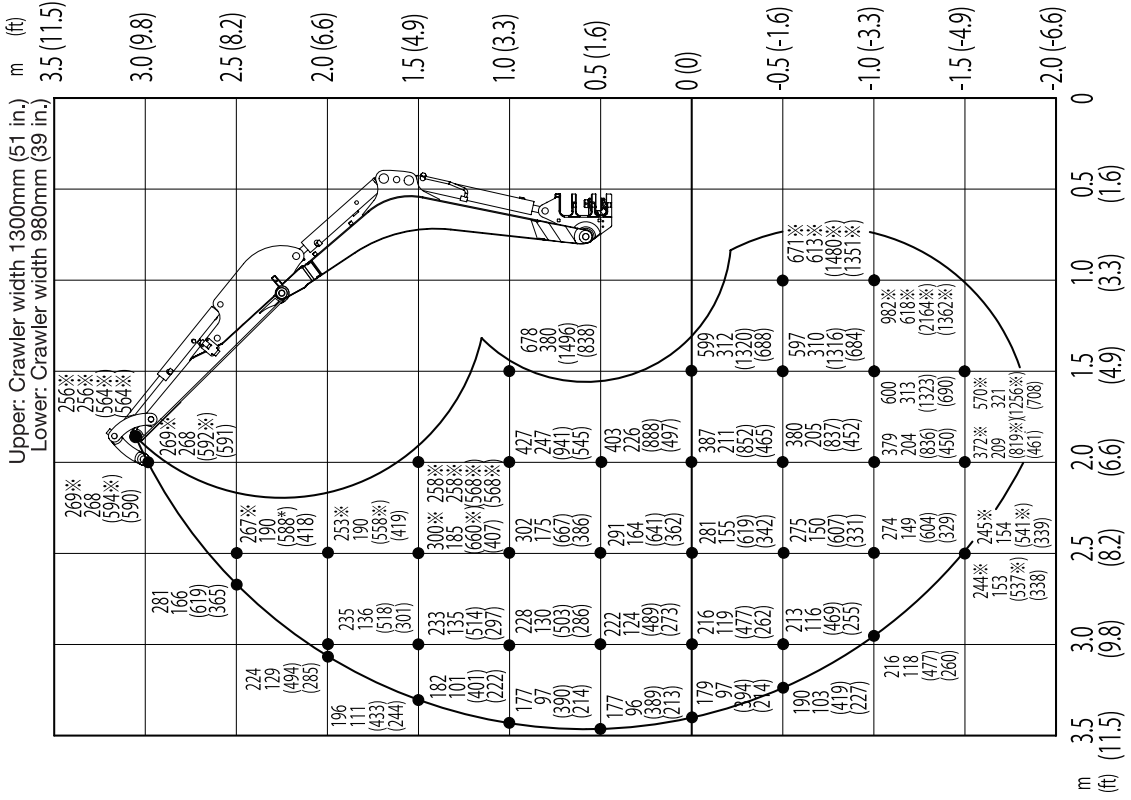


Units: kg(lbs.)

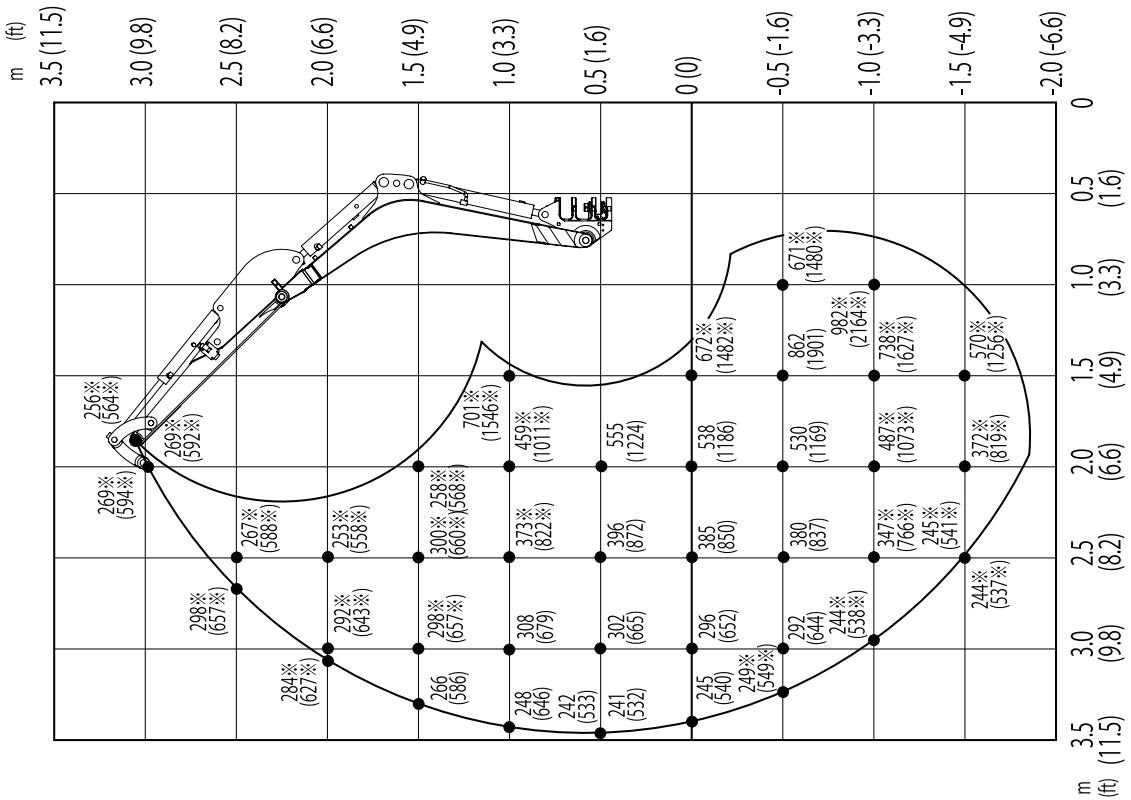


TB217R Long arm

Over Side



Over Rear



Units: kg(lbs.)